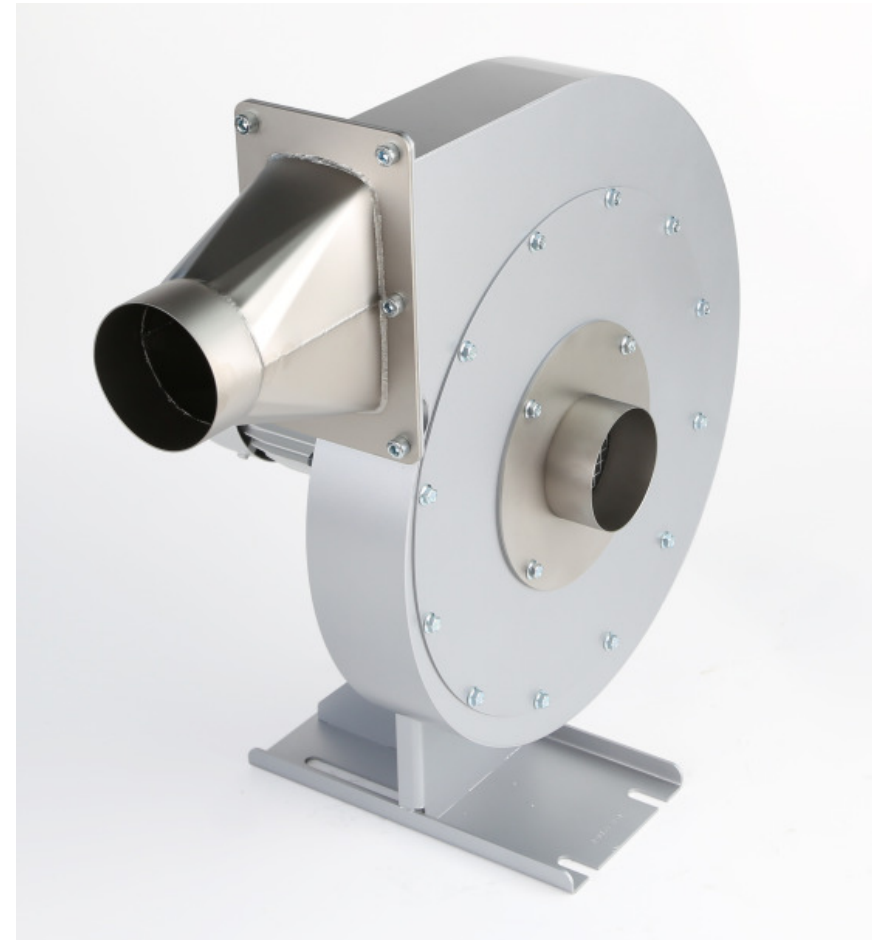


RBR (HT-Blower)

ideal the blower for recirculation

Energy saving with hot air recirculation, as simple as it is efficient.

- The RBR Blower is outstandingly suited for applications where hot air recirculation is applied.
- It can be operated with inlet temperatures up to 350°C (662°F).
- It can be ideally combined with the LE 5000 DF-R and LE 10000 DF-R double flange air heaters and their accessories.
- Flanges and adaptors, as well as the temperature-resistant hoses are available.
- The blower is due to be ready for sale beginning July 2016.



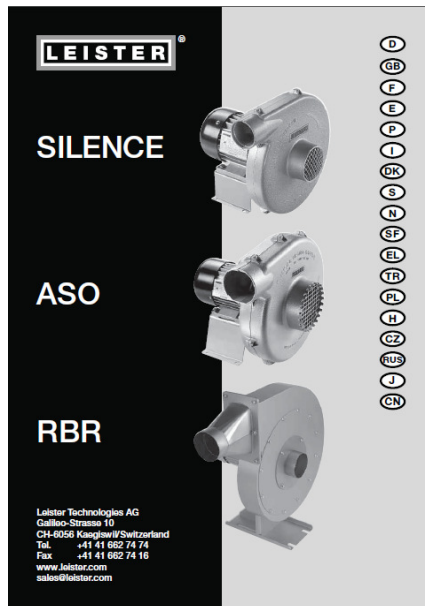
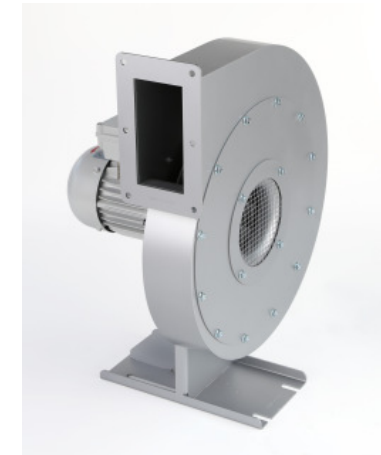
RBR – Blower with inlet- and outlet-flange (Ø 90 mm)

RBR (HT-Blower)

ideal the blower for recirculation

RBR = Radial Blower (suitable for) Recirculation

156.049 - RBR, Blower with inlet- & outlet-flange



Type RBR	Design	Radial blower			
Voltage for three-phase supply	V~	3 x 230	3 x 277	3 x 400	3 x 480
Power consumption	W	550 / 660			
Frequency	Hz	50	60	50	60
Air volume	l/min.	18000	20000	18000	20000
Static pressure (100 Pa = 1 mbar)	Pa	2200	2550	2200	2550
Emission level	dB(A)	61			
Environmental protection	DIN 40050	IP 54			
Diameter of air outlet (external Ø)	mm	90			
Diameter of air intake (external Ø)	mm	90			
Ambient temperature	°C	-20 ... 60			
Intake temperature	°C	-20 ... 350			
Weight	kg	19,0			
Size	mm	page 5			
Mark of conformity		CE (ErP ok)			
Protection class I		⚡			



Manual RBR integrated in SILENCE/ASO-Manual

RBR – Blower: Technical data – no single phase operation

RBR without flanges

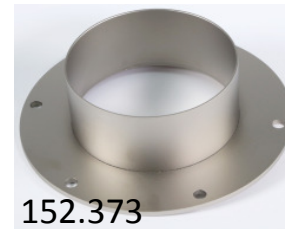
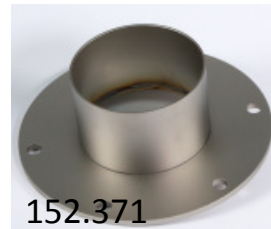
Accessories

Flanges, Hoses & Gaskets

- 152.441 Gasket HT 5000 DF Inlet
- 152.442 Gasket HT 10000 DF Inlet
- 152.443 Gasket HT 5000 DF Outlet
- 152.444 Gasket HT 10000 DF Outlet



- 152.371 Inlet Flange LE 5000 DF Ø 60
- 152.373 Inlet Flange LE 10000 DF Ø 90



- 152.372 Outlet Flange LE 50000 DF Ø 62
- 152.374 Outlet Flange LE 10000 DF Ø 92

- 152.905 Outlet Flange LE 5000 DF Ø 92.5/60.7 x 3
- 152.906 Outlet Flange LE 10000 DF Ø 121.5/89.5 x 3



- 152.520 Adapter Ø 60 (inner) zu Ø 90 (outer)
- 152.521 Adapter Ø 90 (inner) zu Ø 60 (outer)
- 152.522 Adapter Ø 62 (inner) zu Ø 92 (outer)
- 152.523 Adapter Ø 92 (inner) zu Ø 62 (outer)



Pictures not true to scale

Accessories

Flanges, Hoses & Gaskets



152.440, 152.439



152.518, 152.519, 155.421, 155.422

- 152.439 Hose HT DN60 insulated 2m
- 152.440 Hose HT DN60 insulated 5m
- 152.518 hose clip inside for Hose HT DN60 bridge type 55-75 mm
- 152.519 hose clip outside for Hose HT DN60 bridge type 85-105 mm

- 155.419 Hose HT DN90 insulated 2m
- 155.420 Hose HT DN90 insulated 5m
- 155.421 hose clip inside for Hose HT DN90 bridge type 95-115 mm
- 155.422 hose clip outside for Hose HT DN90 bridge type 125-145 mm



152.439, 152.440, 155.419, 155.420

Recirculation – Equipment from LEISTER

example for a set of articles



156.049 Blower + 155.419 Hose



152.373 inlet flange + 152.442 inlet gasket + 146.479 LE 10000 DF-R 11kW + 152.444 outlet gasket + 152.374 outlet flange